

下机架拼装说明手册

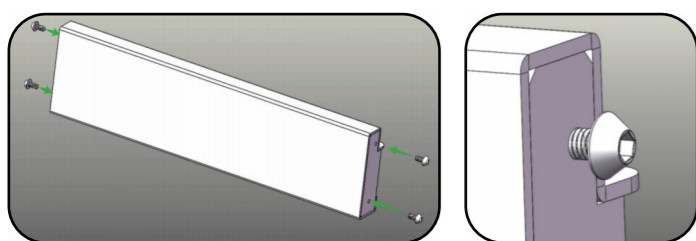
一、打开包装，根据下方图示，确认物料数量准确：



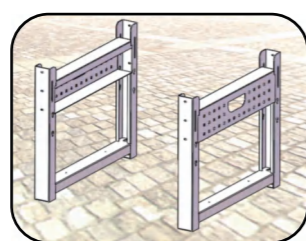
二、按步骤依次安装：

1、物料移至平整地面处；

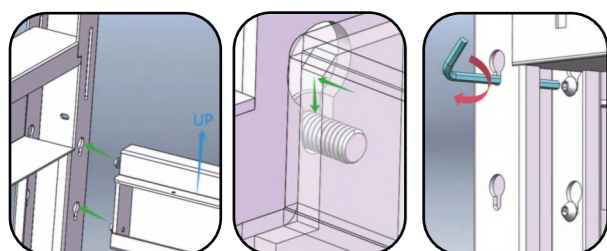
2、横档两侧预装螺丝，螺丝拧入一半；



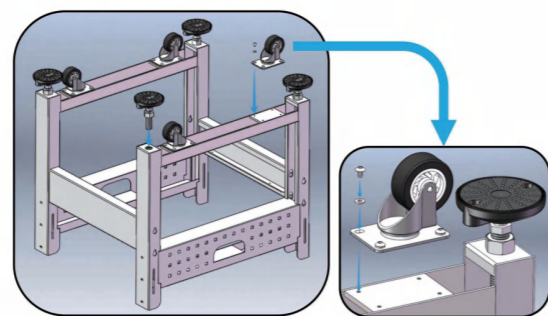
3、左右架如图方向平放于地面，中间预留横档间距；



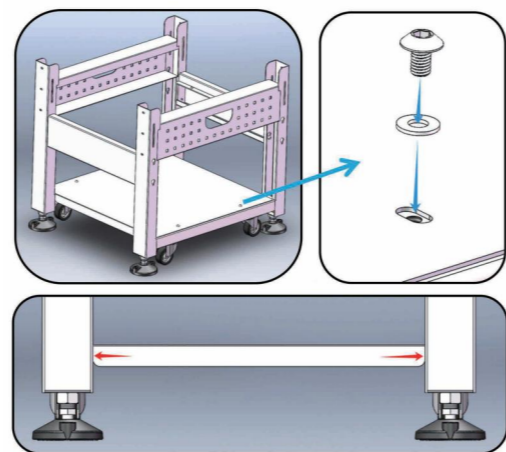
4、连接档折弯边朝上，横档螺丝卡入左右架葫芦孔后，往下卡入腰槽；用6mm六角扳手预紧螺丝（顺时针拧紧，逆时针拧松）；



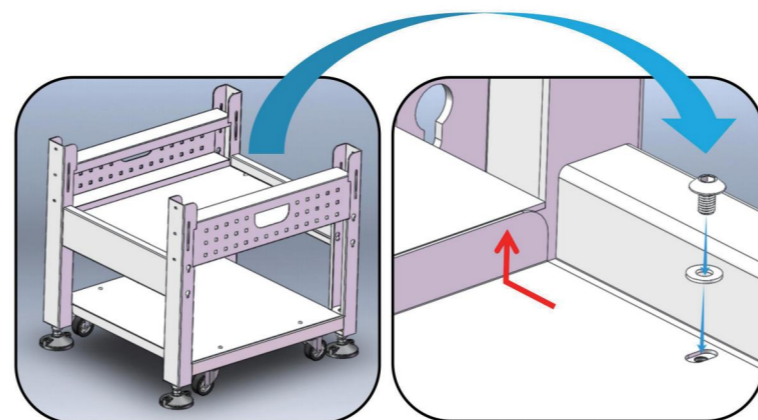
5、连接档缺口朝内，安装完成后，把下机架翻转180°，安装脚杯和脚轮，脚轮用4mm六角扳手拧紧；



6、脚垫朝下放置于地面平整处，分别安装上托盘和下托盘，用4mm六角扳手拧紧；

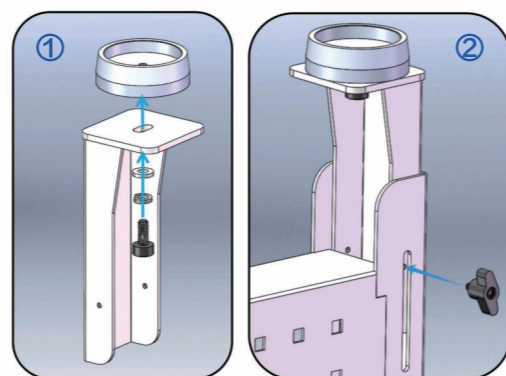


下托盘翻边朝下，两侧与左右架侧面贴平

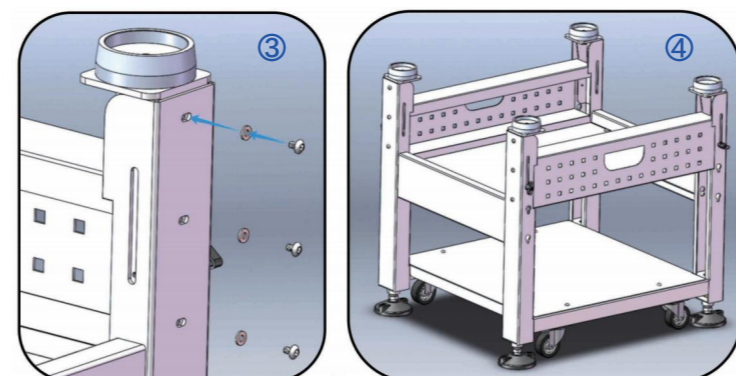


上托盘翻边朝上

7、安装调节脚，脚垫用6mm六角扳手拧入；

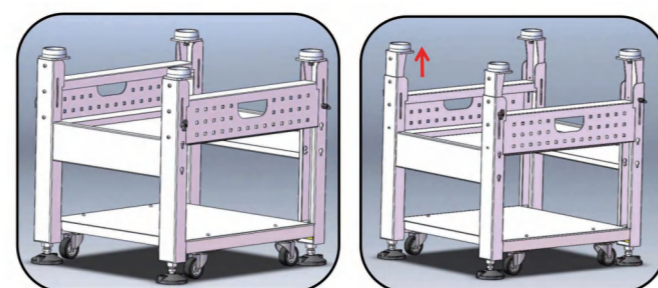


①、安装脚垫，不拧紧，可活动
②、调节脚放入左右架，拧入Z型螺丝



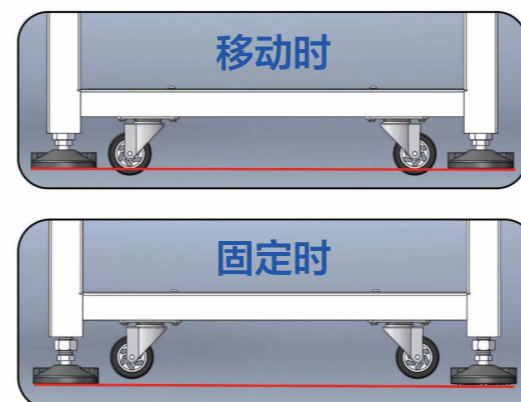
③、用4mm内六角扳手拧入
④、依次安装四只调节脚，高度一致

8、调节脚高度调节，可调两档，如图所示：



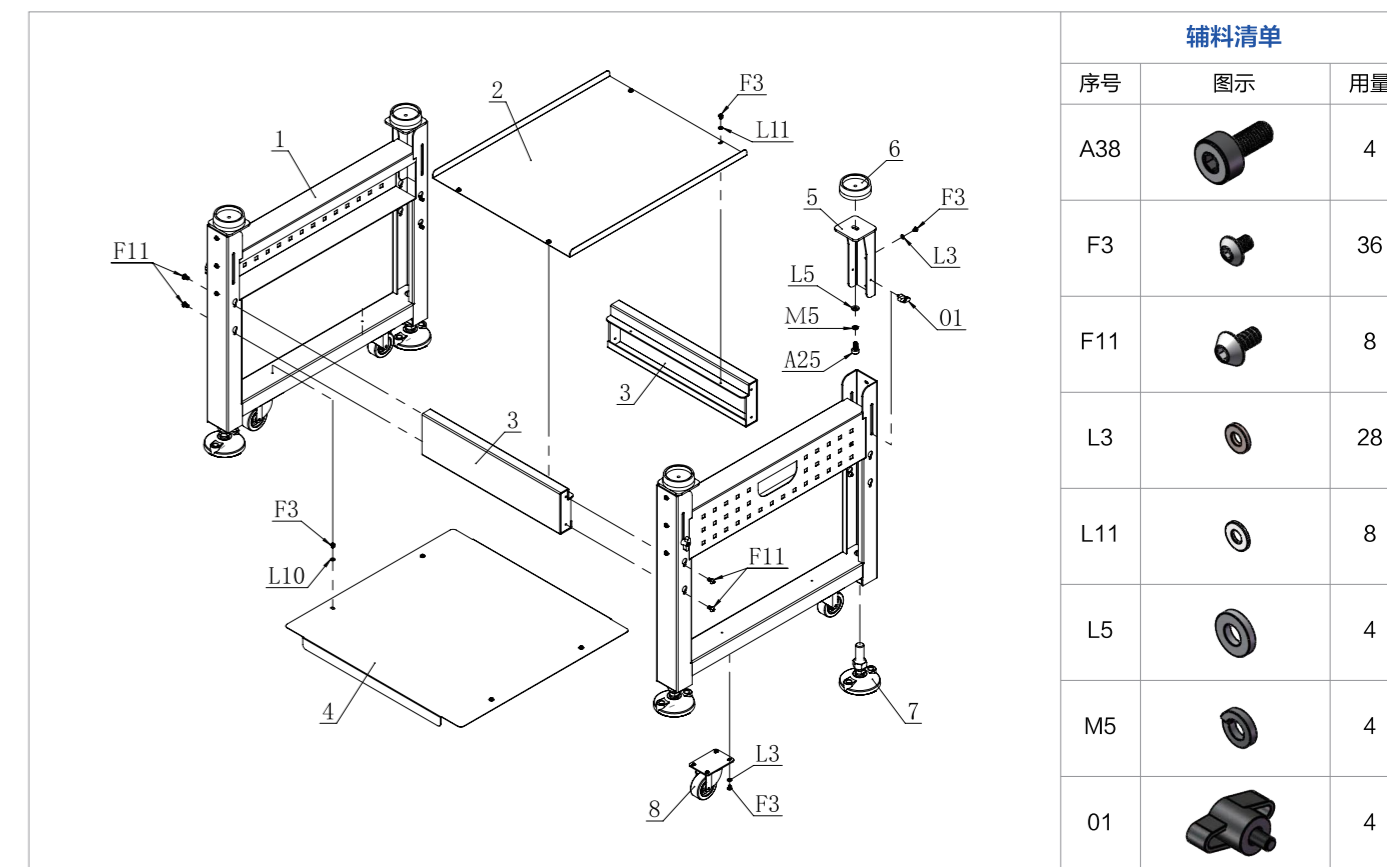
1档 1st Gear 2档 2nd Gear

9、移动时，脚杯高于脚轮；固定位置时脚轮高于脚杯；



10、上述步骤，在完成位置确定后即可拧紧螺丝，确认是否松动；完成检查后，才可放置机器或投入使用；

龙门下机架爆炸图



龙门下机架零件清单

| 序号 | 名称 | 图号/规格 | 库位 | 序号 | 名称 | 图号/规格 | 库位 |
|----|----------|---------------|-------------|-----|-----------|-------|-------------|
| 1 | 左右架 | / | XN | A38 | 内六角圆柱头螺丝 | M8*20 | / |
| 2 | 托盘架 | / | XN | F3 | 内六角伞形螺丝 | M5*8 | FL-2329 |
| 3 | 连接档 | / | XN | F11 | 内六角伞形螺丝 | M6*12 | FL-0338 |
| 4 | 托盘架2 | / | XN | L3 | 平垫 | 5mm | FL-0207 |
| 5 | 调节脚 | / | XN | L11 | 尼龙平垫 | 5mm | / |
| 6 | 脚垫 | KK-MT-05 | 5864-01-001 | L5 | 平垫 | 8mm | / |
| 7 | 龙门机经济型脚垫 | MY-LM-MTJ-260 | 0493-01-001 | M5 | 8mm弹垫（黑色） | 8mm | FL-0240 |
| 8 | 3寸脚轮 | MY-LM-MTJ-209 | 0210-01-001 | O1 | Z型手柄螺丝 | M5X8 | 5508-01-001 |

Assembling Manual of Lower Stand

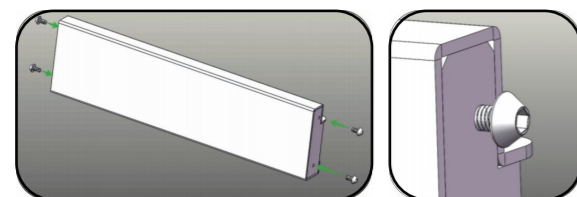
1. Open the packaging, and referring to the illustrations below, confirm the accuracy of the material quantities.



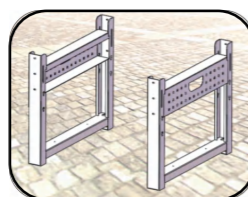
2. Step-by-Step Installation

2-1. Move all materials to a flat, level place ;

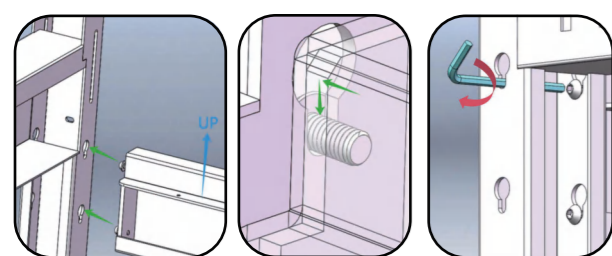
2-2. Pre-install screws on both sides of the crossbar, screwing them in halfway ;



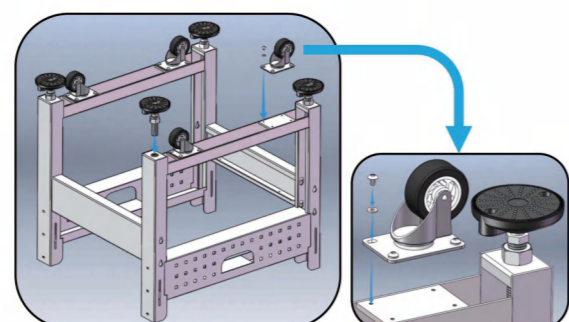
2-3. Place the left and right support frame of stand on the ground as indicated in the diagram, leaving a space for the crossbar in the middle ;



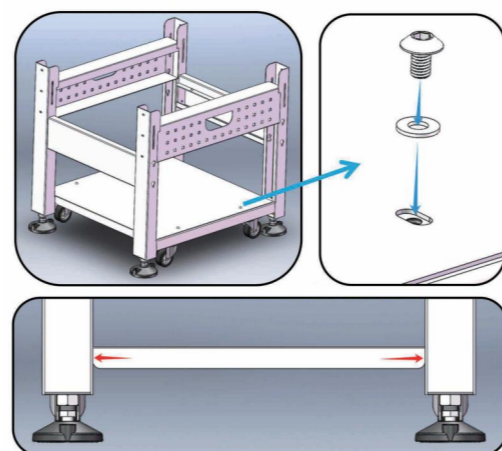
2-4. Position the connecting bracket with the bent edge facing upwards. Insert the crossbar screws into the keyhole slots of the left and right frames, then slide them down into the waist slots. Use a 6mm hex wrench to pre-tighten the screws (tighten clockwise, loosen counterclockwise) ;



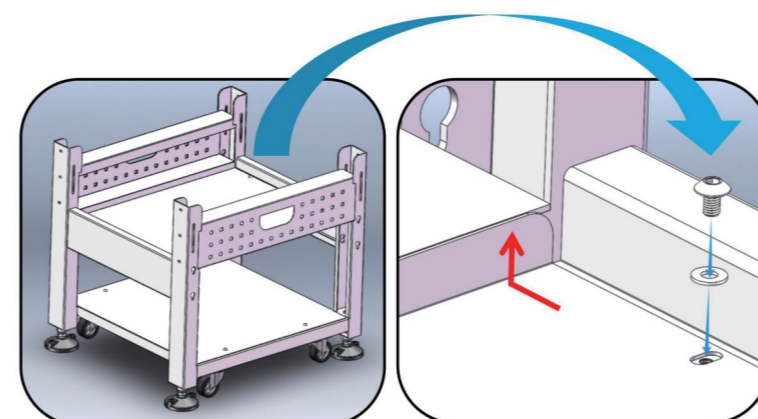
2-5. Ensure the notch of the connecting bracket faces inward. After installation, flip the lower frame 180°, then install the leveling feet and casters. Secure the casters with a 4mm hex wrench ;



2-6. Place the foot pads downward on a flat surface and install the upper and lower trays, securing them with a 4mm hex wrench;

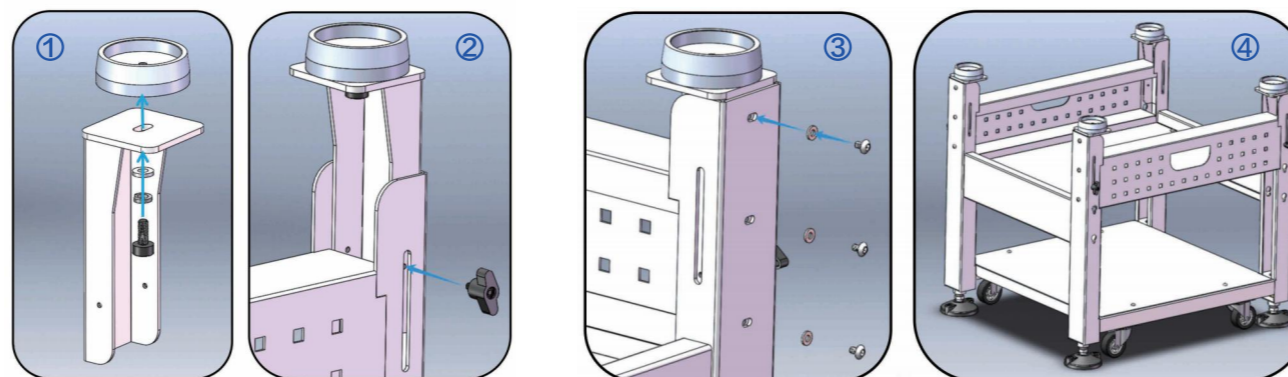


The lower tray's flange should face downward, aligning with the sides of the left and right frames



The tray's flange should face upward

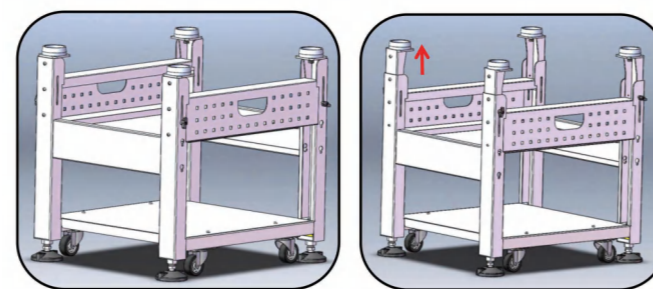
2-7. Install the adjustable feet, screwing the foot pads in with a 6mm hex wrench ;



①. Install the foot pads without tightening, allowing movement ;
②. Place the adjustable feet into the left and right frames and screw in the Z-shaped screws ;

③. Use a 4mm hex wrench to tighten ;
④. Install all four adjustable feet in the same manner, ensuring they are at the same height ;

2-8. The Stand with 2 adjustable heights by setting to two positions as shown in the diagram ;



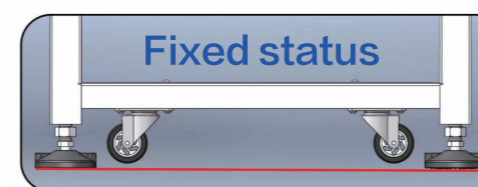
1st Gear

2nd Gear

2-9. When moving the machine, ensure the leveling feet are higher than the casters; when in a fixed position, the casters should be higher than the leveling feet ;

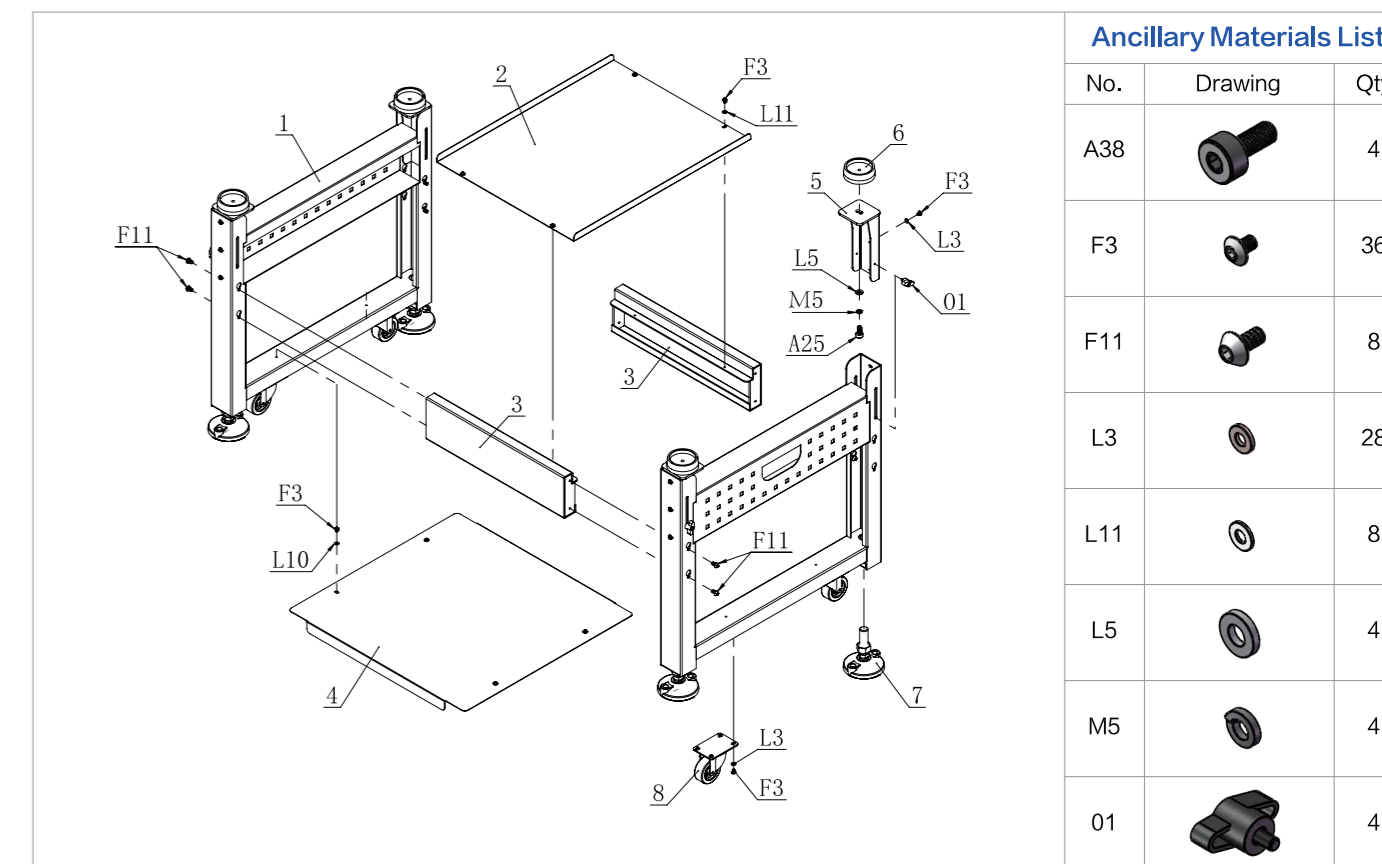


Fixed status



2-10. After confirming the final position, tighten all screws and check for any looseness. Only after completing these checks should the machine be placed or put into operation ;

Exploded View of Lower Stand



Ancillary Materials List

| No. | Drawing | Qty |
|-----|---------|-----|
| A38 | | 4 |
| F3 | | 36 |
| F11 | | 8 |
| L3 | | 28 |
| L11 | | 8 |
| L5 | | 4 |
| M5 | | 4 |
| O1 | | 4 |

Parts List of Lower Stand

| No. | Name | Drawing No./ Specification | Storage Location | No. | Name | Drawing No./ Specification | Storage Location |
|-----|----------------------------|----------------------------|------------------|-----|----------------------------------|----------------------------|------------------|
| 1 | Left & right support frame | / | XN | A38 | Hexagon Socket Head Cap Screw | M8*20 | / |
| 2 | Upper tray | / | XN | F3 | Hexagon Socket Button Head Screw | M5*8 | FL-2329 |
| 3 | Connect bracket | / | XN | F11 | Hexagon Socket Button Head Screw | M6*12 | FL-0338 |
| 4 | Lower tray | / | XN | L3 | Flat Washer | 5mm | FL-0207 |
| 5 | Height adjustable foot | / | XN | L11 | Nylon Flat Washer | 5mm | / |
| 6 | Upper Foot pad | KK-MT-05 | 5864-01-001 | L5 | Flat Washer | 8mm | / |
| 7 | Ground foot pad | MY-LM-MTJ-260 | 0493-01-001 | M5 | Spring Washer | 8mm | FL-0240 |
| 8 | Caster | MY-LM-MTJ-209 | 0210-01-001 | O1 | Z-Type Handle Screw | M5X8 | 5508-01-001 |